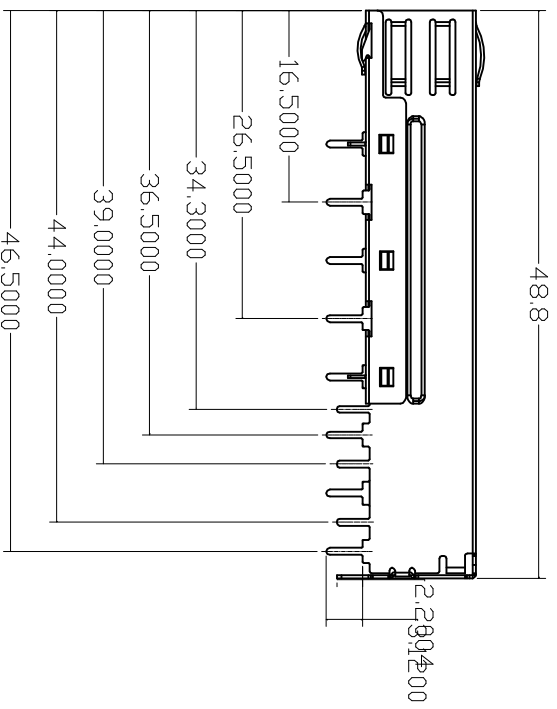
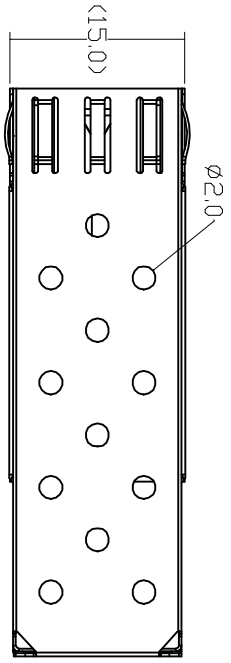
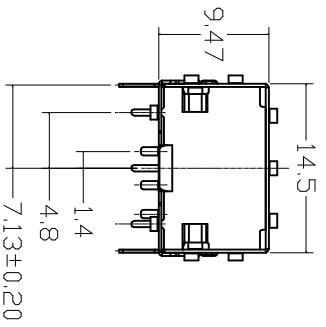
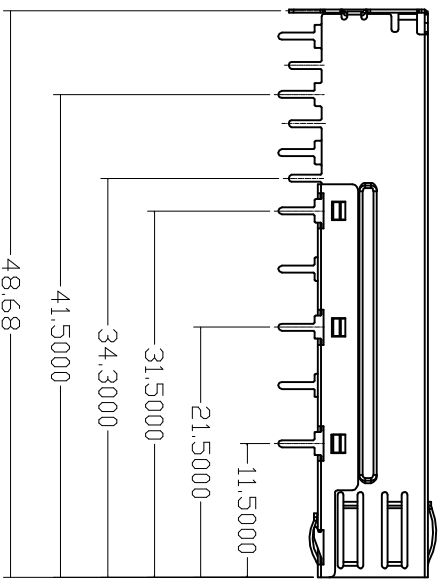
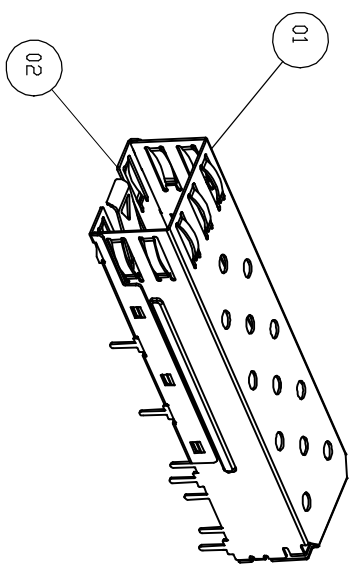


CATEGORY	DESCRIPTION	P/N #
CONNECTOR	SFP 1X1 直立脚焊接式笼子	SFP-11-LA

REV.	ECN NO	DESCRIPTION	REVISED	DATE
A01		New Release	KELLY	2010.06.10



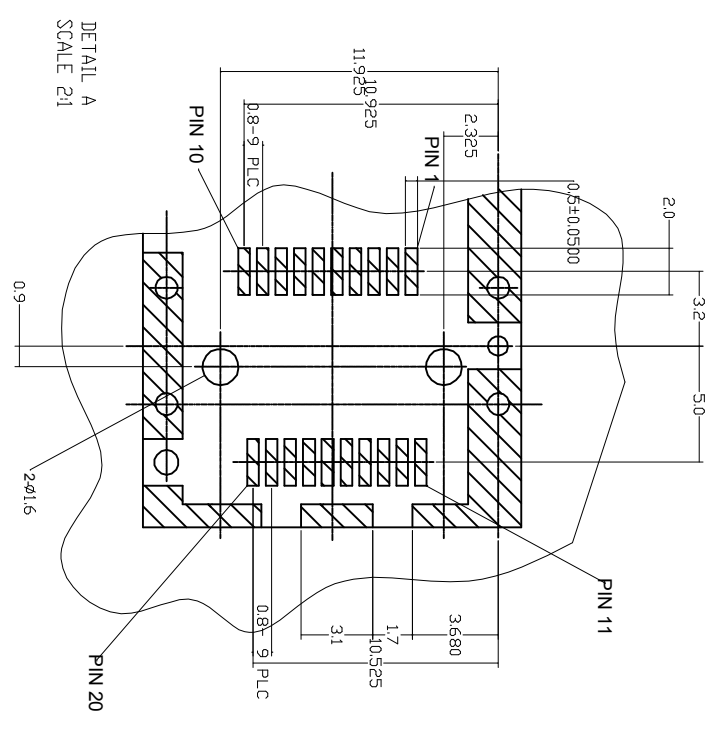
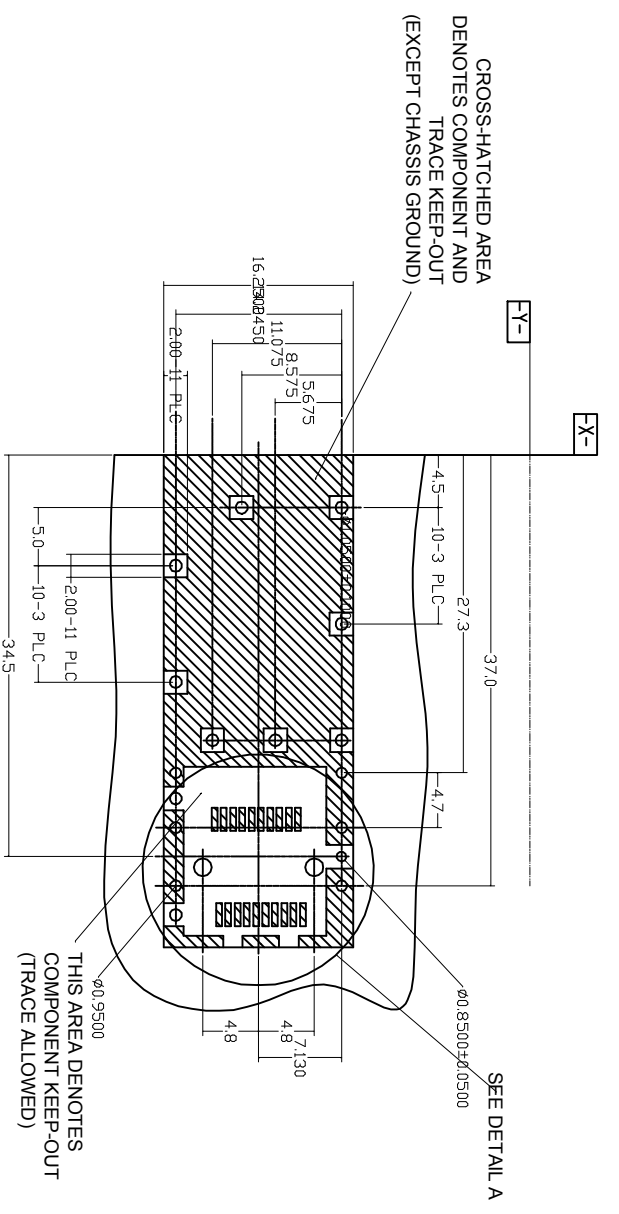
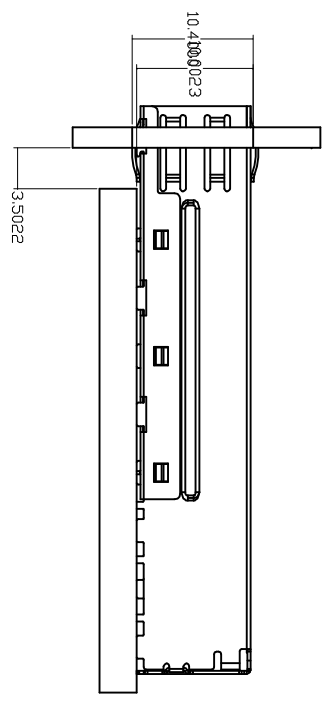
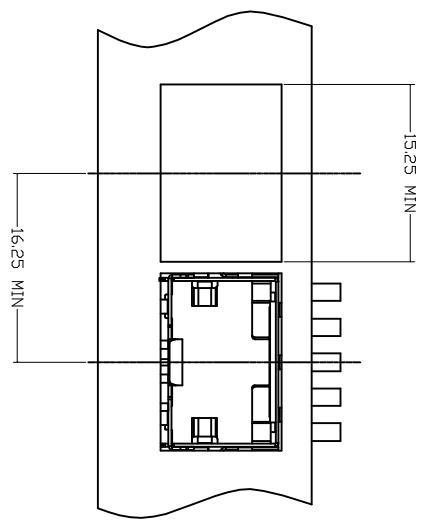
NOTE:
 1, TEMPERATURE:
 OPERATION: -40°C~ +85°C
 STORAGE: -40°C~ +85°C
 2, ROHS COMPLIANT

No.	DESCRIPTION	MATERIAL	PLATING
01	CAGE TOP	COPPER ALLOY	Nickel(Bright)
02	CAGE BOTTOM	COPPER ALLOY	Nickel(Bright)

UNLESS OTHERWISE SPECIFIED TOLERANCES		SCALE: 1/1	UNIT: mm	DWG. NO:	
DECIMALS:	ANGLES:	SIZE: A3	PAGE: 1 OF 2	REV: A01	
X : ±0.5	X : ±2°	APPROVED BY	CHECKED BY	PREPARED BY	
X.X : ±0.3	X.X : ±1'	TONY	BILL	KELLY	
X.XX : ±0.2		CUSTOMER COPY			


东莞市合陵电子有限公司
 Dongguan Heling Electronic Co., LTD
 Connector

CATEGORY	DESCRIPTION	P/N #
CONNECTOR	SFP 1X1 直立脚焊接式笼子	SFP-11-LA



PCB LAYOUT THICKNESS=3.0mm (TOP VIEW)

THIS AREA DENOTES COMPONENT KEEP-OUT (TRACE ALLOWED)

CROSS-HATCHED AREA DENOTES COMPONENT AND TRACE KEEP-OUT (EXCEPT CHASSIS GROUND)

UNLESS OTHERWISE SPECIFIED TOLERANCES	SCALE: 1/1	UNIT: mm	DWG. NO:
DECIMALS: X	SIZE: A3	PAGE: 2 OF 2	REV: A01
ANGLES: X	APPROVED BY	CHECKED BY	PREPARED BY
X.XX ±0.5	TONY	BILL	KELLY
X.X ±0.3	CUSTOMER COPY		
X.XX ±0.2			

东莞市合陵电子有限公司
Dongguan Heling Electronic Co., LTD

4 3 2 1